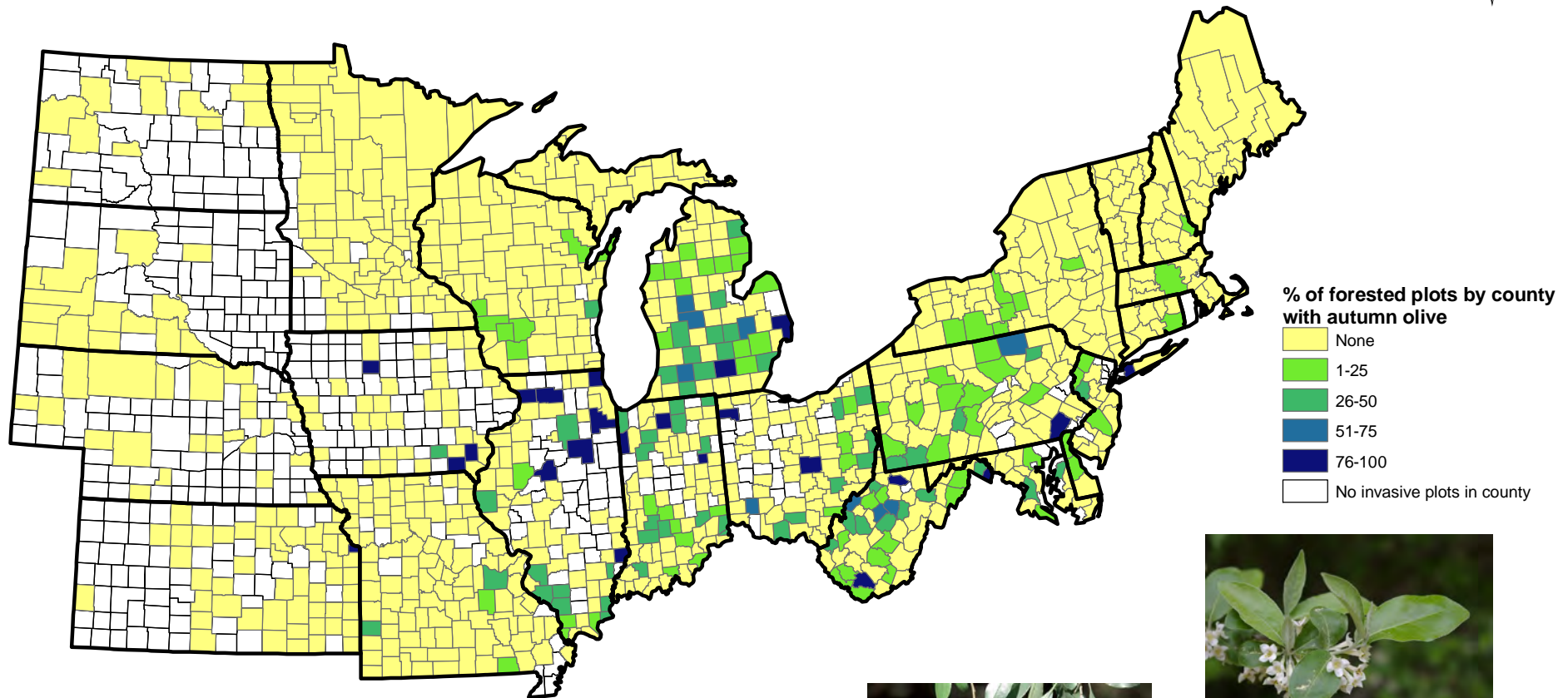


Distribution of autumn olive (*Elaeagnus umbellata*)



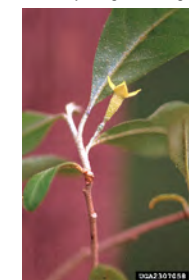
Nancy Loewenstein, Auburn University, Bugwood.org



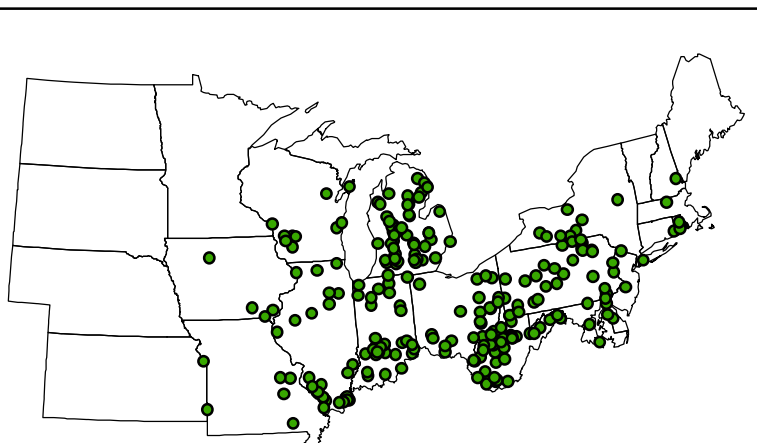
James H. Miller, U.S. Forest Service, www.forestryimages.org



Chris Evans, University of Georgia, www.forestryimages.org



James H. Miller, U.S. Forest Service, www.forestryimages.org



● Approximate locations of autumn olive

For more information about the FIA program's invasive species data collection program, go to: <http://nrs.fs.fed.us/fia/topics/invasives/>

For detailed information about the invasive plants for which FIA collects data, go to: <http://www.treesearch.fs.fed.us/pubs/34183>



USDA FOREST SERVICE
NORTHERN RESEARCH STATION
1992 Folwell Ave., St. Paul, Minn.



Projection: Albers
Sources: USDA Forest Service 2007-2009 FIA data.
For information visit: <http://www.fia.fs.fed.us/>
Produced December, 2010. Author: Cassandra Olson