

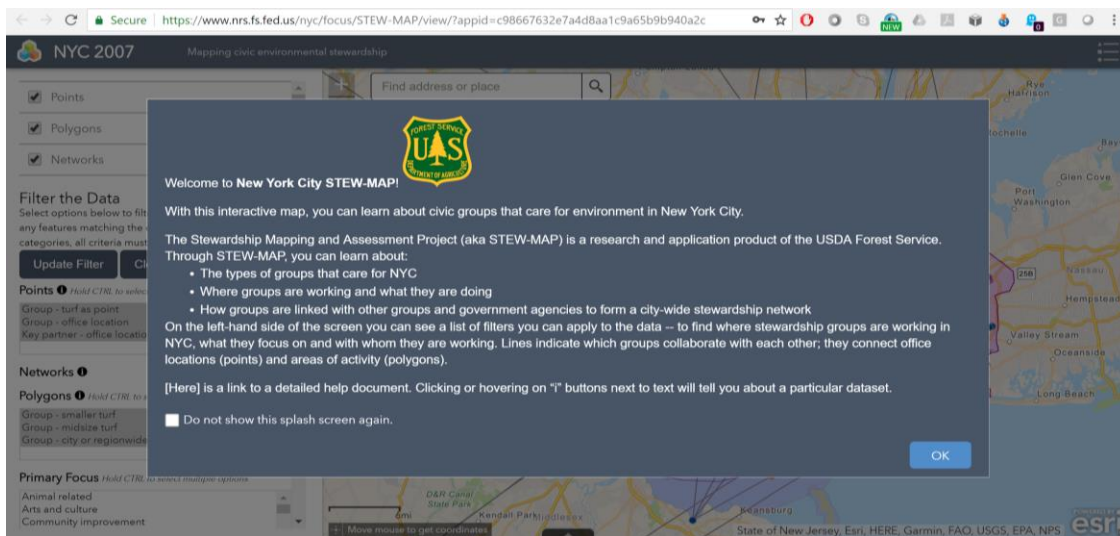
STEW-MAP Interactive Map - Help Guide

Through STEW-MAP, you can learn about:

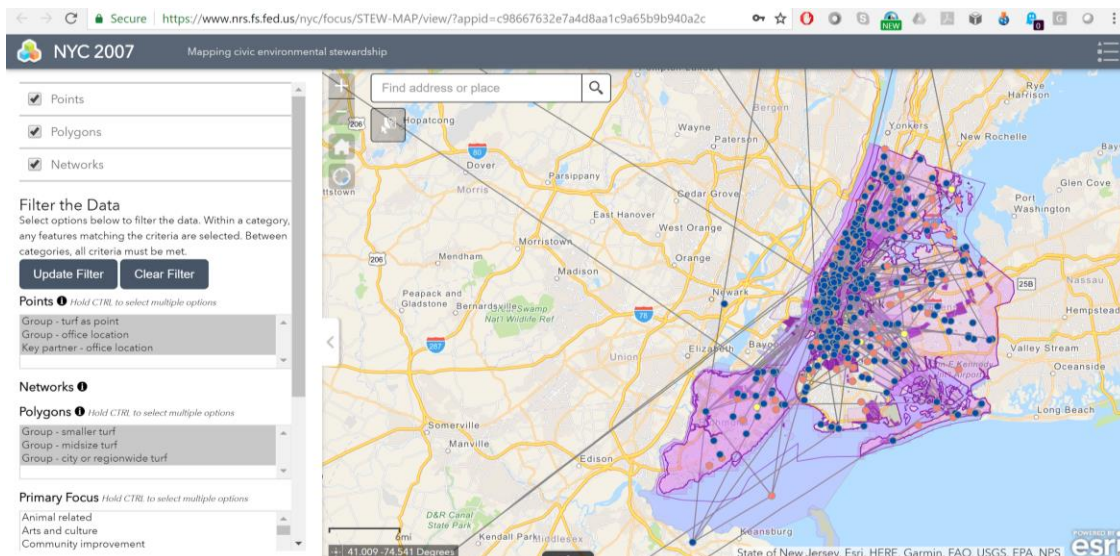
- The types of groups that care for a city or region,
- Where groups are working and what they are doing, and
- How groups are linked with other groups and government agencies to form a city-wide stewardship network.

ArcGIS Online Interactive Map


Each STEW-MAP location has an associated interactive map. Clicking on the map link opens up a window that looks like this:



After you hit OK, you will see the main map screen:





On the top right corner, you will see an icon for the legend (). Click the icon to open the legend and see what all of the colors and symbols indicate.

On the left-hand side of the screen, you can see data types (Points, Polygons, Networks, and Density), as well as an option to Filter the Data.

Data Types

You can also see a definition for each data type by hovering or clicking on the “i” button next to the data name on the left-hand side of the map in the Table of Contents.

Points: Point data highlight office locations of groups and/or areas of activity that are represented by a point. In some cities, areas of activity are represented by a point because of limited information about that area of activity.

Polygons: Polygon data highlight a group’s area of activity best represented by a polygon. This can be a parcel, a neighborhood, or an entire city or region.

Networks: Networks are lines that indicate which groups collaborate with each other; they connect office locations (points) and areas of activity (polygons).

Density: The density layer shows the number of overlapping stewardship groups working in a particular location.

You can click and unclick the boxes to turn each of these features on and off if you do not wish to view all of them together.

Filtering the Data

There are a list of filters you can apply to the data - to find where stewardship groups are working, what they focus on, and with whom they are working.

You will see five boxes with lists of options to select to filter the data. You can collect any combination of options from these lists to create your filter. To filter, click your selections so that the entire line is highlighted. To select multiple options within each box, hold down Control (Command for Mac users) as you select.

Points: Here you can select whether to view groups visualized by their turf--the area where they work (Group - turf as point), groups who did not provide a turf and are visualized by their office locations (Group - office location), or partners who were listed by other groups on the survey but did not complete the survey themselves (Key partner - office location).

Polygons: Here you can choose whether to view all turfs at once, or whether to filter the groups by size. Some smaller groups are very small (one block or intersection), so you may need to

zoom in to see their turf. Keep in mind that if you keep the view to include the city- or region-wide turfs, they will be listed as stewardship groups for anywhere you click within in the map.

Primary Focus: This shows the list of possible options for the primary focus of each respondent group. Survey respondents could select as many options as they wanted. Filtering by response will show you only groups that selected the indicated focus.

Stewardship Focus: This shows the list of possible site types where groups engage in stewardship work. Survey respondents could select as many options as they wanted. Filtering by response will show you only groups that selected the indicated site type.

Organization Type: This shows the list of possible legal statuses for respondent groups. Survey respondents could only select one response. Filtering by organization type will show you only groups who have that legal status.

As an example of filtering the data, to see all of the turfs of small and mid-size non-profit groups that work on street trees, you would select:

Points: Group - turf as point

Polygons: Group - smaller turf; midsize turf

Stewardship Focus: Street tree

Organization Type: 501(c)(3); 501(c)(4)

Then click “Update Filter” to see your results.

By clicking directly on the turf, point, or network line you are interested in, you can view a pop-up box with attribute data. If the turf has more than one stewardship group, the box will show (1 of X), on the top left corner. You can click through to see all of the groups associated with that turf. If one group has more than one turf, all of the turfs will be highlighted.

In between queries, you can click “Clear Filter.”


Navigating the Map


You can also navigate the map by zooming in and out to see your desired geography. On the top left hand-side of the map itself are a number of buttons that allow you to navigate around the map.



These buttons allow you to move around the map.

The *zoom in* (+) and *zoom out* (-) buttons allow you to zoom in and out of the map


The *home* symbol () zooms you back out to the original extent of the map.

The *my location* symbol () allows you to add your own location to the map to gain perspective on where you are located in your map view.

Search bar

The *address bar* allows you to zoom to a location by its address.

Select an area

The *select* () button allows a section of the map to be selected. The points, polygons, and networks data are all selected for an area, which allows you to export a spreadsheet of selected groups. This type of selection is not connected to the “Filter the Data” selection type, however.

Tabular data


Tabular data is viewable by clicking on the () button at the bottom center of the map. A table will then pop up.

The data are separated by tabs into points, polygons, and networks. You can filter the data directly in the attribute table by any of the questions in the STEW-MAP survey.

The tabular data will show you the details for the data view that you have filtered, including the group name, contact information, mission and responses to survey questions. You can also filter by map extent to show the data for whatever part of the map you have navigated to on the screen.

Downloading Data

Some locations' maps enable you to download the spatial dataset. To download the data from the attribute table, click “options” in the top left side of the attribute table and select “export as

CSV.” You can also download data by clicking the *download arrow* from the map () and choosing to download the data as points, polygons, networks, or density.